

Bridge Inspection Report

B6522
I-40EB/Se51/239.97
over
Dawson/Z-F/L-0.01



Inspection Date:

Inspected By:

Inspection Type(s):

TABLE OF CONTENTS

	PAGE NUMBER
LOCATION MAP	3
NATIONAL BRIDGE INVENTORY	7
ELEMENTS	8
PICTURES	9
SKETCHES	11

Inspector:

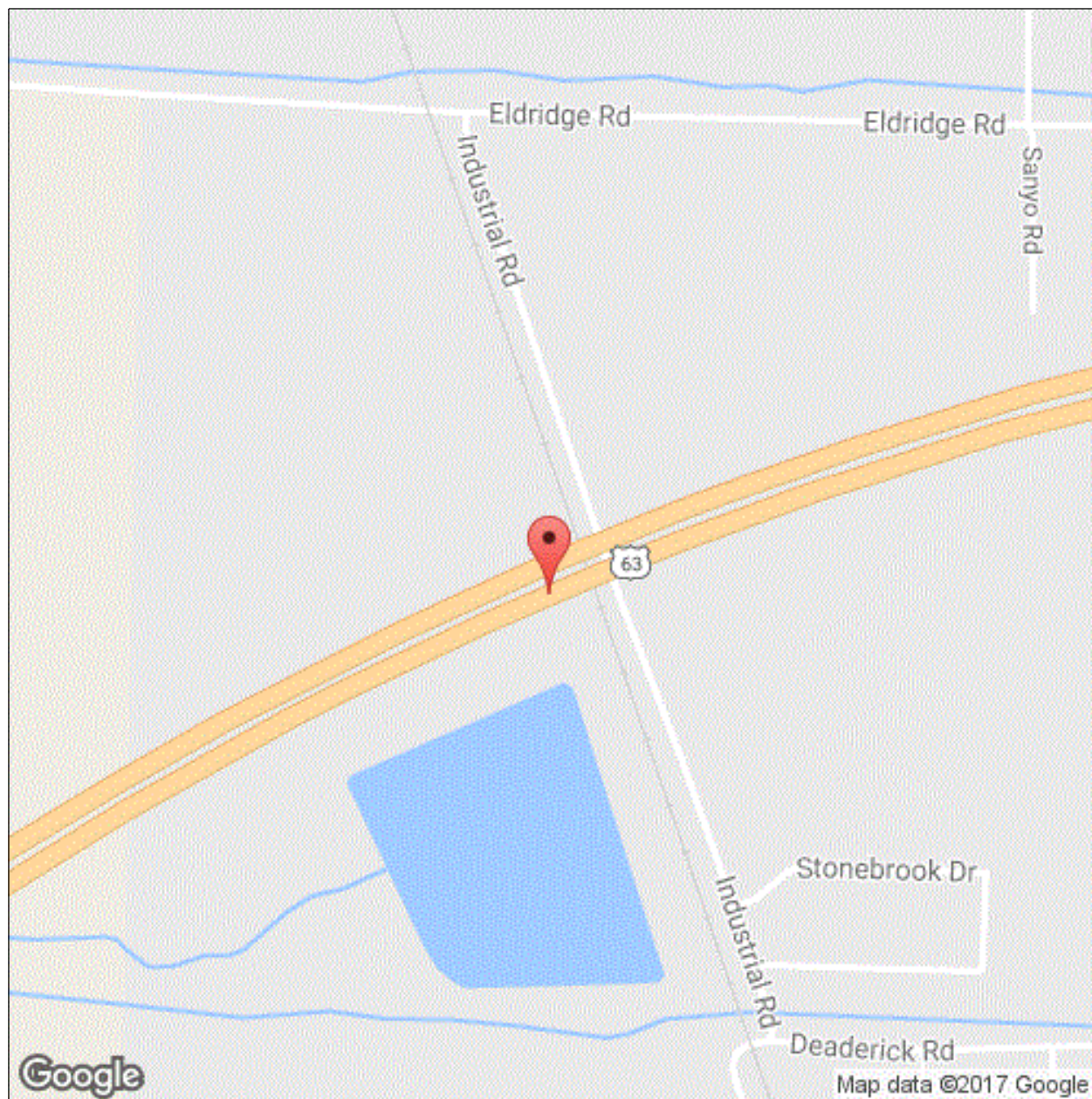
Structure Number: B6522

Inspection Date:

Facility Carried: I-40EB/Se51/239.97

Bridge Inspection Report

Location Map



Latitude: 35.033691

Longitude: -90.803307

Inspector:

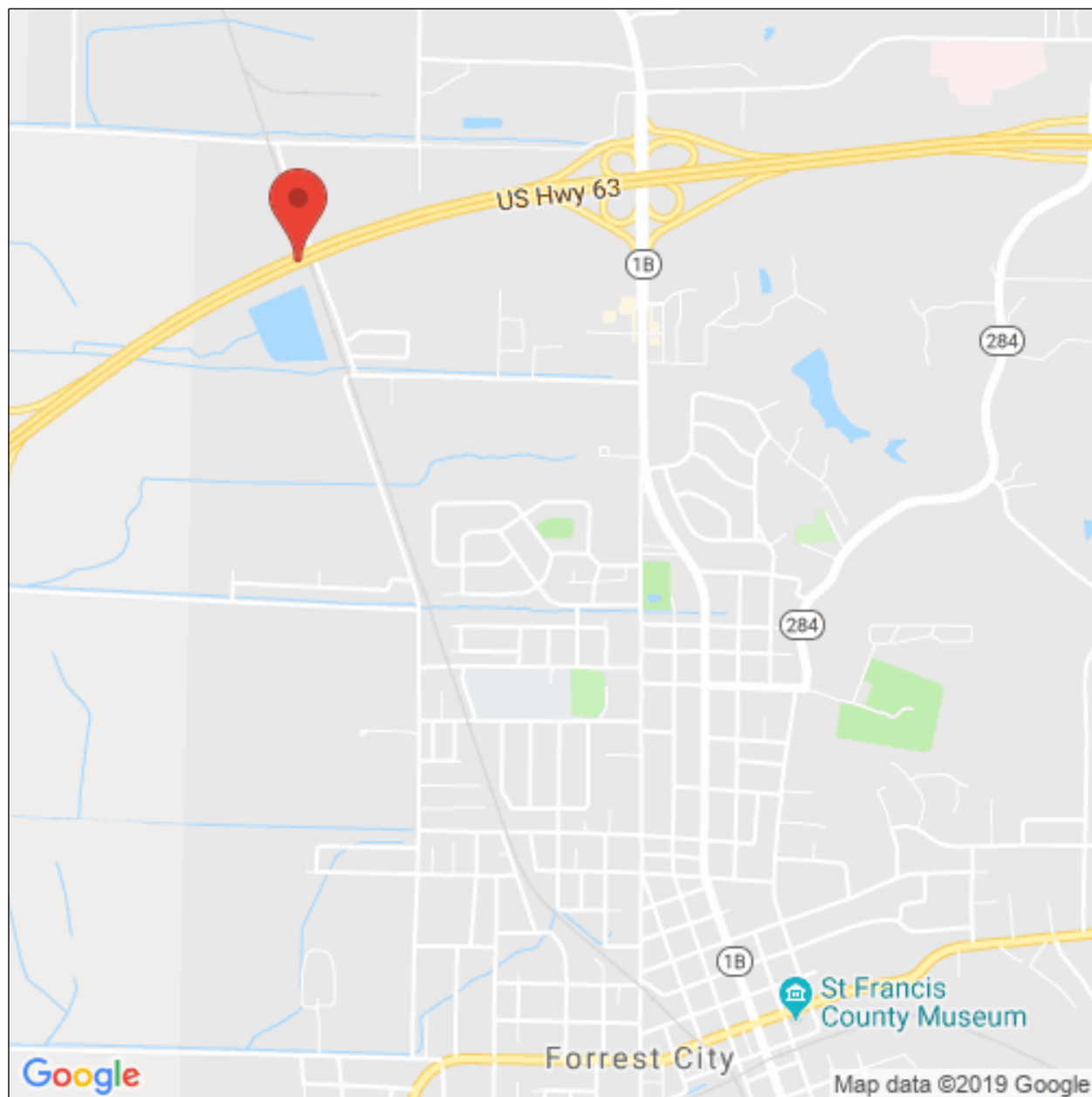
Structure Number: B6522

Inspection Date:

Facility Carried: I-40EB/Se51/239.97

Bridge Inspection Report

Location Map



Latitude: 35.033691

Longitude: -90.803307

Inspector:

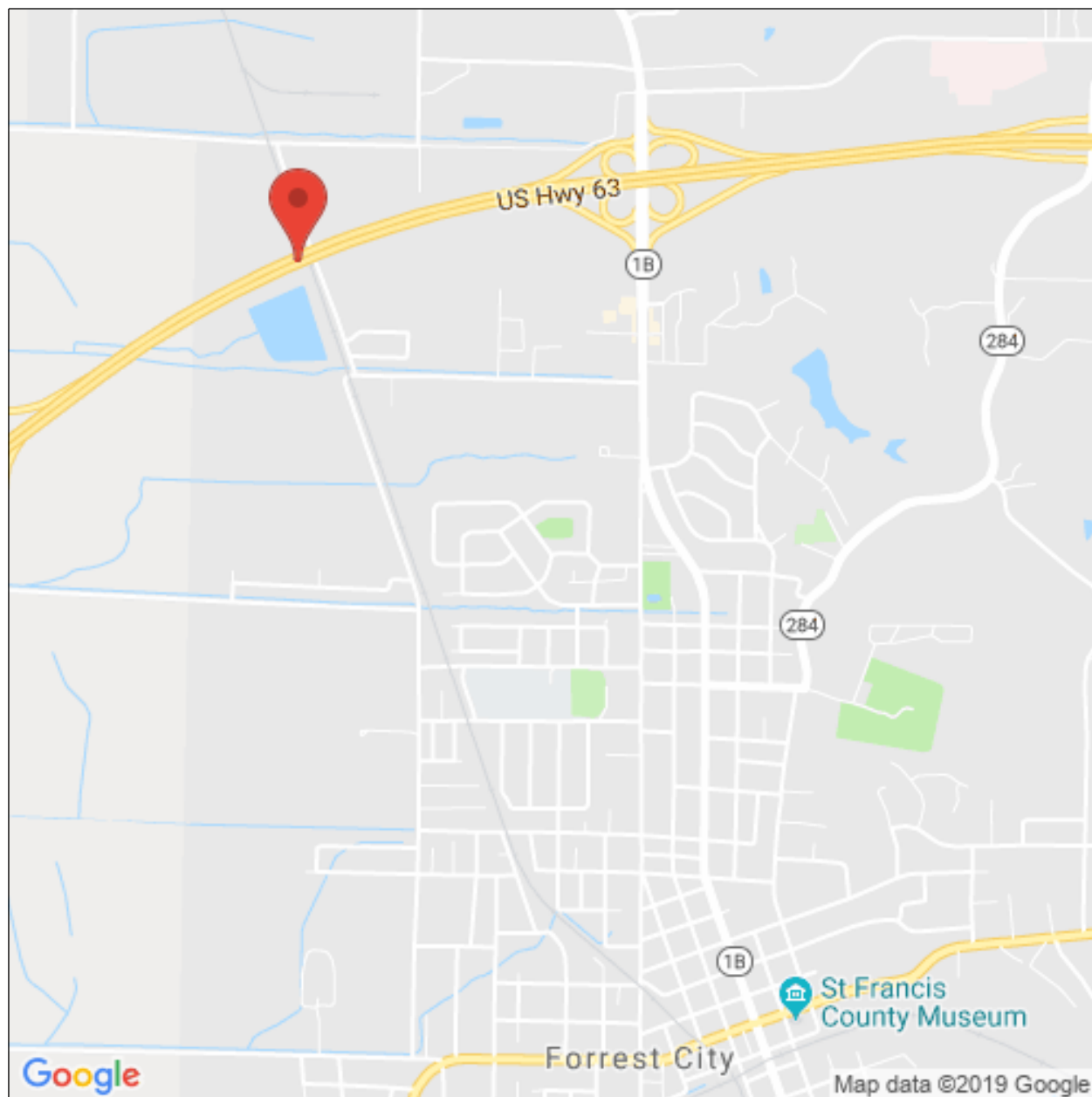
Structure Number: B6522

Inspection Date:

Facility Carried: I-40EB/Se51/239.97

Bridge Inspection Report

Location Map



Latitude: 35.033691

Longitude: -90.803307

Inspector:

Inspection Date:

Structure Number: B6522

Facility Carried: I-40EB/Se51/239.97

Bridge Inspection Report

Executive Summary

Inspector:

Structure Number: B6522

Inspection Date:

Facility Carried: I-40EB/Se51/239.97

Bridge Inspection Report

National Bridge Inventory

IDENTIFICATION		INSPECTIONS	
(1) STATE CODE	056 - Arkansas	(90) INSPECTION DATE	02/26/2019
(8) STRUCTURE NUMBER	B6522	(91) DESIGNATED INSPECTION FREQUENCY	24
(5) INV. ROUTE (ON/UNDER)	1 1 1 40 2	(92) CRITICAL FEATURE INSPECTION	(93) CFI DATE
(2) HIGHWAY AGENCY	01 (3) COUNTY CODE 123	A. FRACTURE CRITICAL DETAIL	N
(4) PLACE CODE	23980	B. UNDERWATER INSPECTION	N
(6) FEATURES INTERSECTED	Dawson/Z-F/L-0.01	C. OTHER SPECIAL	N
(7) FACILITY CARRIED	I-40EB/Se51/239.97		
(9) LOCATION	0.77 Mi West Of Jct Sh 1		
(11) MILEPOINT 239.970	(12) BASE HIGHWAY NETWORK 1		
(13A) LRS INVENTORY ROUTE	0000040510 (13B) SUBROUTE NUMBER 00		
(16) LATITUDE 35.033691	(17) LONGITUDE -90.803307		
(98A) BORDER BRIDGE CODE			
PERCENT RESPONSIBILITY	(99) BORDER BRIDGE STRUCT		
STRUCTURE TYPE AND MATERIAL		CONDITION	
(43) STRUCTURE TYPE, MAIN		(58) DECK	7
A) KIND OF MATERIAL/DESIGN: 4 - Steel continuous		(59) SUPERSTRUCTURE	7 (60) SUBSTRUCTURE 8
B) TYPE OF DESIGN/CONSTR: 02 - Stringer/Multi-beam or Girder		(61) CHANNEL & CHANNEL PROTECTION	N (62) CULVERT N
(44) STRUCTURE TYPE, APPROACH SPANS			
A) KIND OF MATERIAL/DESIGN: 0 - Other			
B) TYPE OF DESIGN/CONSTR: 00 - Other			
(45) NUMBER OF SPANS IN MAIN 4	(46) NUMBER OF APPROACH 0		
(107) DECK STRUCTURE TYPE 1	(108A) WEARING SURFACE 1		
(108B) DECK MEMBRANE 0	(108C) DECK PROTECTION 1		
AGE OF SERVICE		LOAD RATING AND POSTING	
(27) YEAR BUILT 1996	(106) YEAR RECONSTRUCTED 0000	(31) DESIGN LOAD	6
(42) TYPE OF SERVICE ON 1 UNDER 4		(63) METHOD USED TO DETERMINE OPERATING RATING	1
(28) LANES ON 02 UNDER 02		(64) OPERATING RATING	60.0
(29) AVERAGE DAILY TRAFFIC 39000	(19) BYPASS DETOUR LENGTH 3	(65) METHOD USED TO DETERMINE INVENTORY RATING	1
(30) YEAR OF AVERAGE DAILY TRAFFIC 2014		(66) INVENTORY RATING	36.0
(109) AVERAGE DAILY TRUCK TRAFFIC 40		(70) BRIDGE POSTING	5
		(41) STRUCTURE OPEN/POSTED/CLOSED	A
GEOMETRIC DATA		APPRAISAL	
(48) LENGTH OF MAX SPAN (ft.) 90	(49) STRUCTURE LENGTH (ft.) 287	(67) STRUCTURAL EVALUATION	7
(50) CURB/SIDEWALK WIDTHS (ft.) LEFT 0 RIGHT 0		(68) DECK GEOMETRY	7
(51) BRDG RDWY WIDTH CURB-TO-CURB (ft.) 40.0		(69) UNDERCLEARANCES, VERTICAL & HORIZONTAL	4
(52) DECK WIDTH, OUT-TO-OUT (ft.) 43.1		(71) WATERWAY ADEQUACY	N
(32) APPROACH ROADWAY WIDTH (ft.) 40.0		(72) APPROACH ROADWAY ALIGNMENT	8
(33) BRIDGE MEDIAN 0	(34) SKEW (DEG.) 0	(36) TRAFFIC SAFETY FEATURE	
(35) STRUCTURE FLARED 0	(10) INV RTE, MIN VERT CLEAR (ft.) 99.99	36A) BRIDGE RAILINGS:	1
(47) TOTAL HORIZONTAL CLEARANCE (ft.) 41.3		36B) TRANSITIONS:	1
(53) VERTICAL CLEARANCE OVER BRIDGE ROADWAY (ft.) 99.99		36C) APPROACH GUARDRAIL:	1
(54) VERTICAL UNDER CLEARANCE (ft.) H 23.33		36D) APPROACH GUARDRAIL ENDS:	1
(55) LATERAL UNDER CLEARANCE RIGHT (ft.) H 6.2		(113) SCOUR CRITICAL BRIDGES	N
(56) MIN LATERAL UNDER CLEARANCE (ft.) 0.0		SUFFICIENCY RATING	86.6 STATUS 0
PROPOSED IMPROVEMENTS		CLASSIFICATION	
(75A) TYPE OF WORK PROPOSED	(75B) WORK DONE BY	(112) NBIS BRIDGE LENGTH	Y
(76) LENGTH OF STRUCTURE IMPROVEMENT (ft.) 0		(104) HIGHWAY SYSTEM OF THE INVENTORY ROUTE	1
(94) BRIDGE IMPROVEMENT COST (\$)	0	(26) FUNCTIONAL CLASSIFICATION OF INVENTORY ROUTE	11
(95) ROADWAY IMPROVEMENT COST (\$)	0	(100) STRAHNET HIGHWAY DESIGNATION	1
(96) TOTAL PROJECT COST	0	(101) PARALLEL STRUCTURE DESIGNATION	R
(97) YEAR OF IMPROVEMENT COST ESTIMATE		(102) DIRECTION OF TRAFFIC	1
(114) FUTURE ADT 22628	(115) YEAR OF FUTURE ADT 2027	(103) TEMP STRUCTURE	
		(105) FEDERAL LANDS HIGHWAYS	0
		(110) DESIGNATED NATIONAL NETWORK	1
		(20) TOLL	3
		(21) MAINTENANCE RESPONSIBILITY	01
		(22) OWNER	01
		(37) HISTORICAL	5
		NAVIGATION DATA	
		(38) NAVIGATION CONTROL	N
		(111) PIER OR ABUTMENT PROTECTION	1
		(39) NAV VERT CLEARANCE (ft.)	0
		(116) MIN NAVIGATION VERT CLEARANCE, VERT LIFT BRIDGE (ft.)	0
		(40) NAV HORIZONTAL CLEARANCE (ft.)	0

Inspector:

Structure Number: B6522

Inspection Date:

Facility Carried: I-40EB/Se51/239.97

Bridge Inspection Report

Element Inspection

	Environment	Total Quantity	Units	Condition State 1	Condition State 2	Condition State 3	Condition State 4
12 - Reinforced Concrete Deck	1- Ben.	12207	sq. ft.	9770	2437	0	0
	Soffit overhangs have transverse cracks space two to four feet apart with light efflorescence. Deck has open and sealed longitudinal and transverse cracks each span majority are sealed various spaced.						
1120 - Efflorescence/Rust Staining		287		0	287	0	0
1130 - Cracking (RC and Other)		2150		0	2150	0	0
107 - Steel Open Girder/Beam	1- Ben.	1425	ft.	1365	60	0	0
	Girders have a grainy feel. Span #4 girder #1 outside bottom where web meets bottom flange has a one inch wide full length of girder in span area where a layer is peeling off. Span #4 girder #1 two inches down web from top flange on out side has a layer is peeling off.						
7000 - Damage		60		0	60	0	0
515 - Steel Protective Coating		11952	sq. ft.	0	11952	0	0
3430 - Oxide Film Degradation Color/Texture Adherence(Steel Protective Coatings)		11952		0	11952	0	0
205 - Reinforced Concrete Column	1- Ben.	6	each	5	1	0	0
	Bent #3 left column scraped by collision.						
1190 - Abrasion/Wear (PSC/RC)		1		0	1	0	0
215 - Reinforced Concrete Abutment	1- Ben.	124	ft.	93	31	0	0
	Abutment back walls have vertical cracks spaced four feet apart some with light efflorescence.						
1120 - Efflorescence/Rust Staining		31		0	31	0	0
234 - Reinforced Concrete Pier Cap	1- Ben.	125	ft.	125	0	0	0
301 - Pourable Joint Seal	1- Ben.	86	ft.	18	0	0	68
	Abutment #1 joint material has twenty five feet that is torn. Abutment #2 joint material is torn full length.						
2310 - Leakage		68		0	0	0	68
310 - Elastomeric Bearing	1- Ben.	25	each	25	0	0	0
321 - Reinforced Concrete Approach Slab	1- Ben.	1752	sq. ft.	1608	0	144	0
	All approach slabs have transverse cracks.						
1130 - Cracking (RC and Other)		144		0	0	144	0
331 - Reinforced Concrete Bridge Railing	1- Ben.	570	ft.	427	143	0	0
	Bridge rails have vertical and longitudinal cracks spaced two to four feet apart with light efflorescence of outside.						
1120 - Efflorescence/Rust Staining		143		0	143	0	0

Inspector:

Inspection Date:

Structure Number: B6522

Facility Carried: I-40EB/Se51/239.97

Bridge Inspection Report

Pictures

PHOTO 1

Description

PHOTO 1

Description

Inspector:

Inspection Date:

Structure Number: B6522

Facility Carried: I-40EB/Se51/239.97

Bridge Inspection Report

Pictures

PHOTO 2

Description

PHOTO 2

Description

Inspector:

Inspection Date:

Structure Number: B6522

Facility Carried: I-40EB/Se51/239.97

Bridge Inspection Report

Sketches

Inspector:

Structure Number: B6522

Inspection Date:

Facility Carried: I-40EB/Se51/239.97

Bridge Inspection Report

Maintenance Needs

Date Reported: 2/12/2015 12:00:00 AM

Priority: D - Routine

Work Code: N/A

Deficiency Description:

Deck has open and sealed longitudinal and transverse cracks each span majority are sealed various spaced.

Work Description:

Date Repairs Completed:

Maintenance Comments:

Stage: Monitor



PHOTO 1 Description

Stage: Monitor

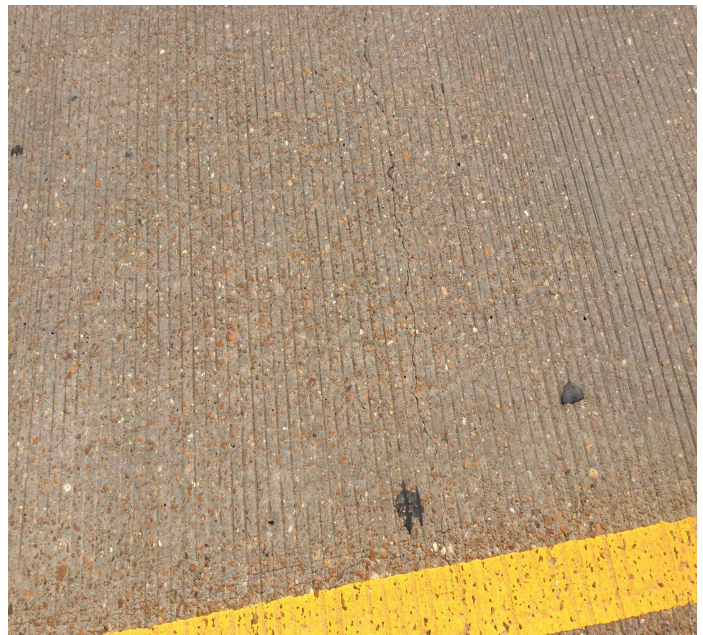


PHOTO 2 Description

Inspector:

Inspection Date:

Structure Number: B6522

Facility Carried: I-40EB/Se51/239.97

Bridge Inspection Report

Maintenance Needs

Stage: Monitor



PHOTO 3 Description Typical deck

Inspector:

Structure Number: B6522

Inspection Date:

Facility Carried: I-40EB/Se51/239.97

Bridge Inspection Report

Maintenance Needs

Date Reported: 02/26/2019

Priority: C - Important

Work Code: N/A

Deficiency Description:

Abutment #1 joint material has twenty five feet that is torn.

Abutment #2 joint material is torn full length.

Work Description:

Date Repairs Completed:

Maintenance Comments:

Stage: Open



PHOTO 1 Description Abutment #1 joint material has twenty five feet that is torn.

Stage: Open



PHOTO 2 Description Abutment #2 joint material is torn full length.